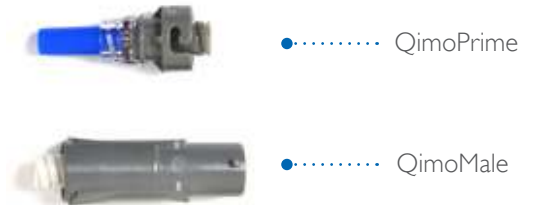




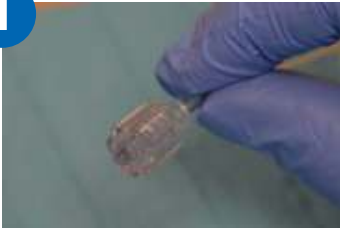
# Safe Closed System

Safe disconnection from an elastomeric or an electronic pump at the end of chemotherapy



## Priming Qimomale

1



Prime the tubing - according to your local protocols

2



Connect Qimoprime to Qimomale

3



Lightly screw the Qimomale onto the syringe - only turn the Qimomale 1/4 in rotation to avoid locking on completely - then prime as per protocol

4



Gently unscrew Qimomale from the syringe

5



Disconnect Qimoprime from Qimomale

6



Firmly screw the Qimomale onto the infusion line until you feel free rotation of the connection -this will ensure the Qimomale is locked and not removable.

Qimomale and Qimofemale are sterile medical devices class IIa, compliant with 93/42CEE directive as to appendix 2. Certification established by G-MED, notified body N°0459. Medical devices manufactured and distributed by Vygon.