

CRITICAL CARE

MONITORING & CRITICAL ACCESS

multicath[®]
highflow UP

PRODUCT GUIDE



Vygon's highflow catheter range

Focusing on ease of use and patient welfare, Vygon's multicath highflow UP catheter deliver efficient, effective care whilst protecting clinicians from the risks of sharps injuries

Introducing the highflow multicath UP range

The multicath UP range of highflow catheters is dedicated to patients experiencing imminent blood loss associated with accidents, major surgery or for those in intensive care with multiple injuries or sepsis. All the catheters are designed for insertion using the Seldinger technique for the safe and accurate placement of IV lines.

The key features of the multicath highflow UP range of kits:

- Large lumen highflow catheter with a flow rate of up to 400 mL/min
- Pressure tested distal lumen, suitable for use in Radiology for contrast media infusion
- Choice of catheter lengths from 12.5cm to 20cm
- Seldisafe safety introducer needles with optimised, echogenic properties
- Anti-kink Teflon-coated nitinol safety J - guide wire with additional ECG marking and single-hand introduction
- ECG cable combcard for accurate catheter tip location
- Safety scalpel



Catheter material

Thermosensitive PUR fully length-marked catheter

The product range

A quick glance at our highflow product range:

- | | |
|---------|--|
| Page 4 | multicath3 UP multicath5 UP |
| Page 5 | multicath5 UP |
| Page 6 | combcard |
| Page 8 | vyset procedure packs |
| Page 10 | seldisafe safety needles |
| Page 11 | Full product range and ordering codes |





Distal line

Pressure of 150psi/10 bar delivers a flow rate of 5ml/s of a fluid with viscosity of 11.8 mPa s

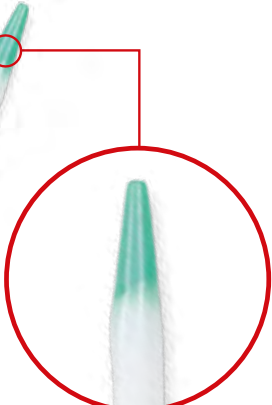
Z-MAN safety clamp

Reliable clamping of highflow line through unique clamping design



highflow line

Suitable for use at flow rate of up to 400ml/min



Catheter tip

Soft and flexible to prevent vascular injury during catheter placement



Fixation wing

With printed catheter size and length for ease of catheter identification



Colour coded hubs

For easy identification

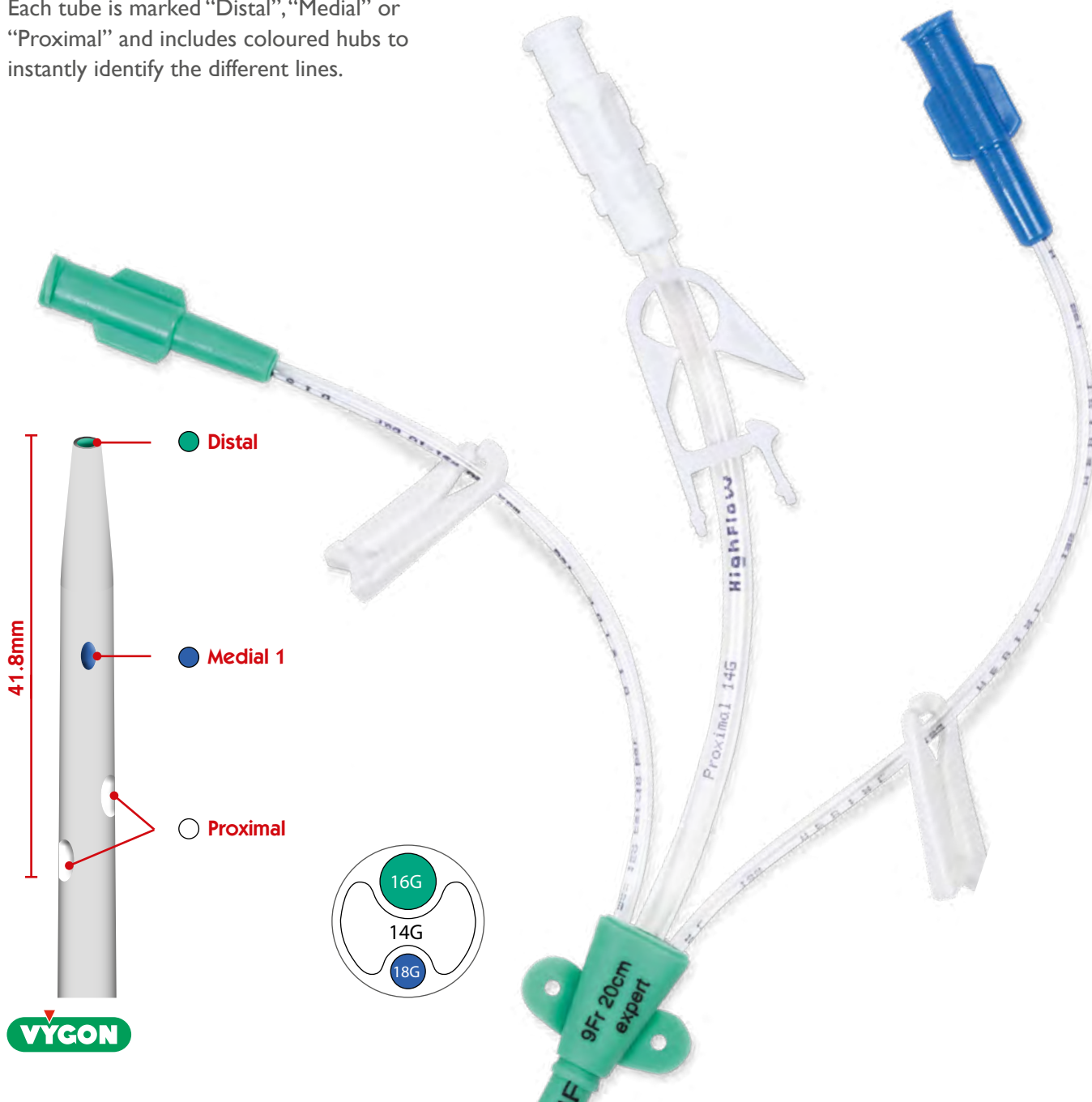
multicath3 UP

Triple-lumen 9Fr highflow catheter available in various length configurations

multicath3 UP is a radiopaque triple-lumen central venous catheter, which is designed to be inserted into the deep veins (jugular, subclavian, femoral etc) using the Seldinger technique.

Each lumen leads to an individual exit hole along the distal section of the catheter within 42mm of the catheter tip. At the proximal end, the three lumens are connected to extension tubes of different lengths.

Each tube is marked "Distal", "Medial" or "Proximal" and includes coloured hubs to instantly identify the different lines.



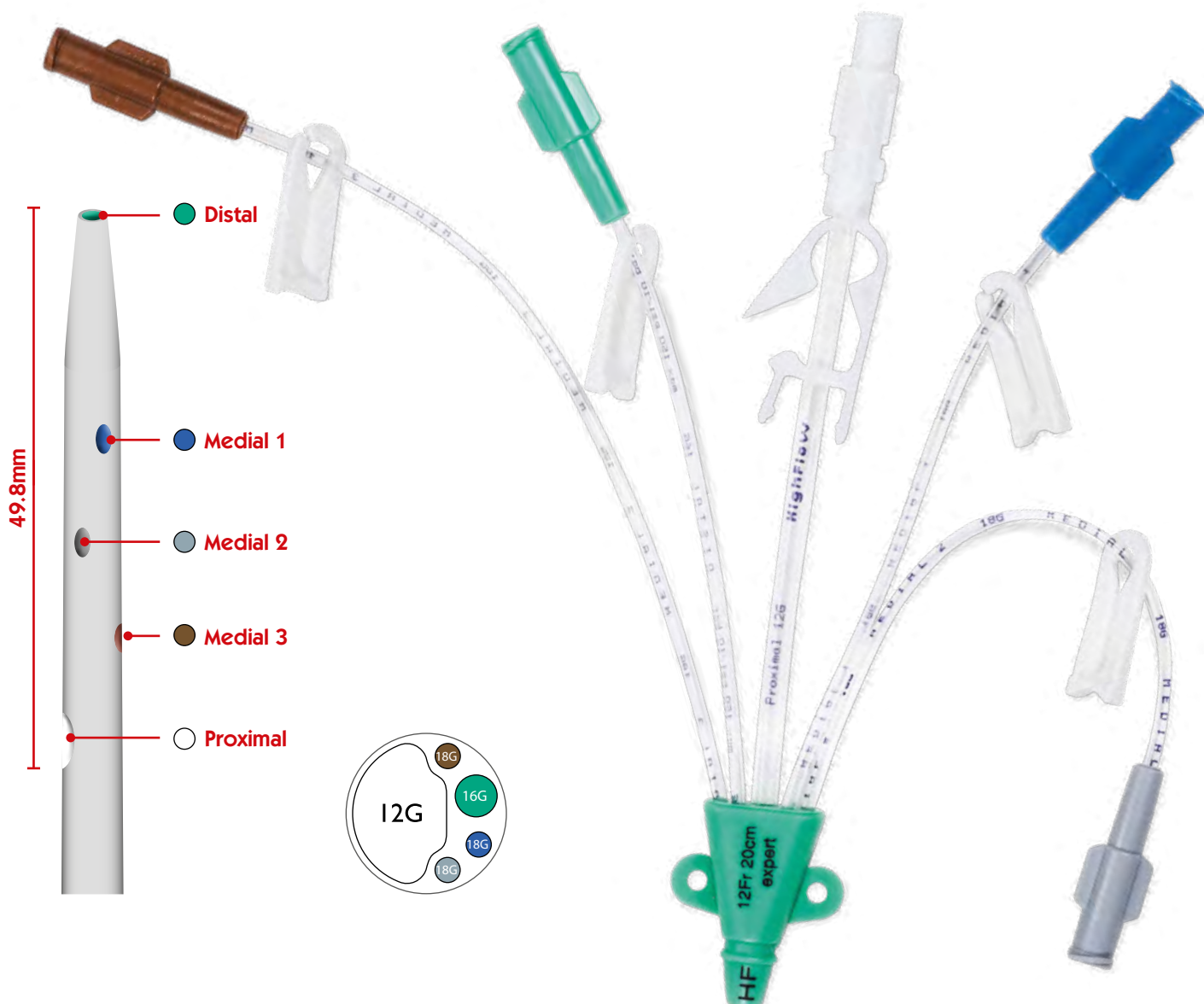
multicath5 UP

Five-lumen 12Fr highflow catheter available in a standard or expert version incorporating silver ion technology

multicath5 UP is a radiopaque quin-lumen central venous catheter, which is designed to be inserted into the deep veins (jugular, subclavian, femoral etc) using the Seldinger technique.

Each lumen leads to an individual exit hole along the distal section of the catheter within 50mm of the catheter tip. At the proximal end, the five lumens are connected to extension tubes of different lengths.

Each extension tube is marked “Distal”, “Medial 1”, “Medial 2”, “Medial 3” Or “Proximal” and includes coloured hubs to instantly identify the different lines.



combcard

ECG connection cable for fast, simple and precise placement of central venous catheters using the Seldinger technique

Guiding the placement of central venous catheters using cardiac electric signals is an accepted clinical method practiced in many healthcare institutions and is documented in many papers including:

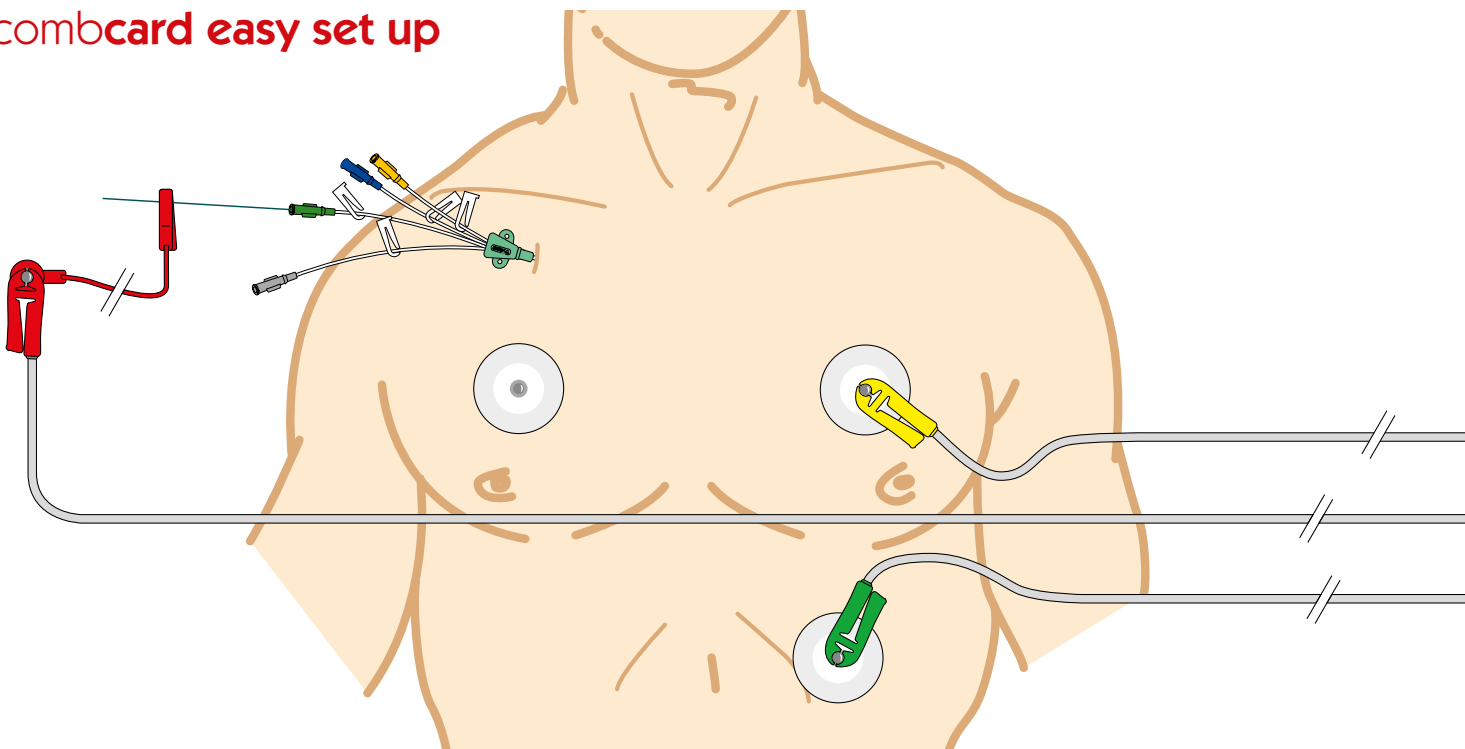
- Electrocardiogram (EKG) Guided Peripherally Inserted Central Catheter Placement and Tip Position: Results of a Trial to Replace Radiological Confirmation, by Nancy Moureau et al. JAVA Vol. 15 No. 1 2010, pp. 9-15.
- The ECG method for positioning the tip of PICCs: results from two preliminary studies, by Mauro Pittiruti et al. JAVA Vol. 13 No. 4 2008, pp. 112-119.

The basic principle of the ECG method is that the position of the tip inside the venous system can be detected by using the catheter itself (or a guidewire inside the catheter) as an endovascular electrode, which replaces the "red" or "right shoulder" electrode of the standard surface ECG.

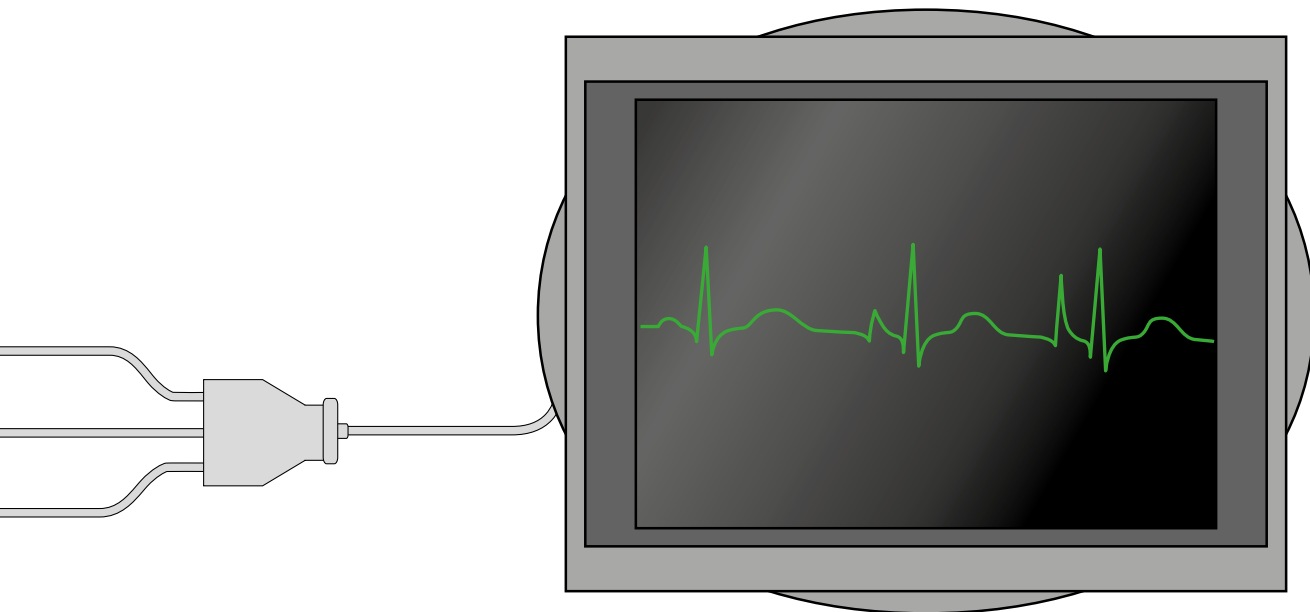
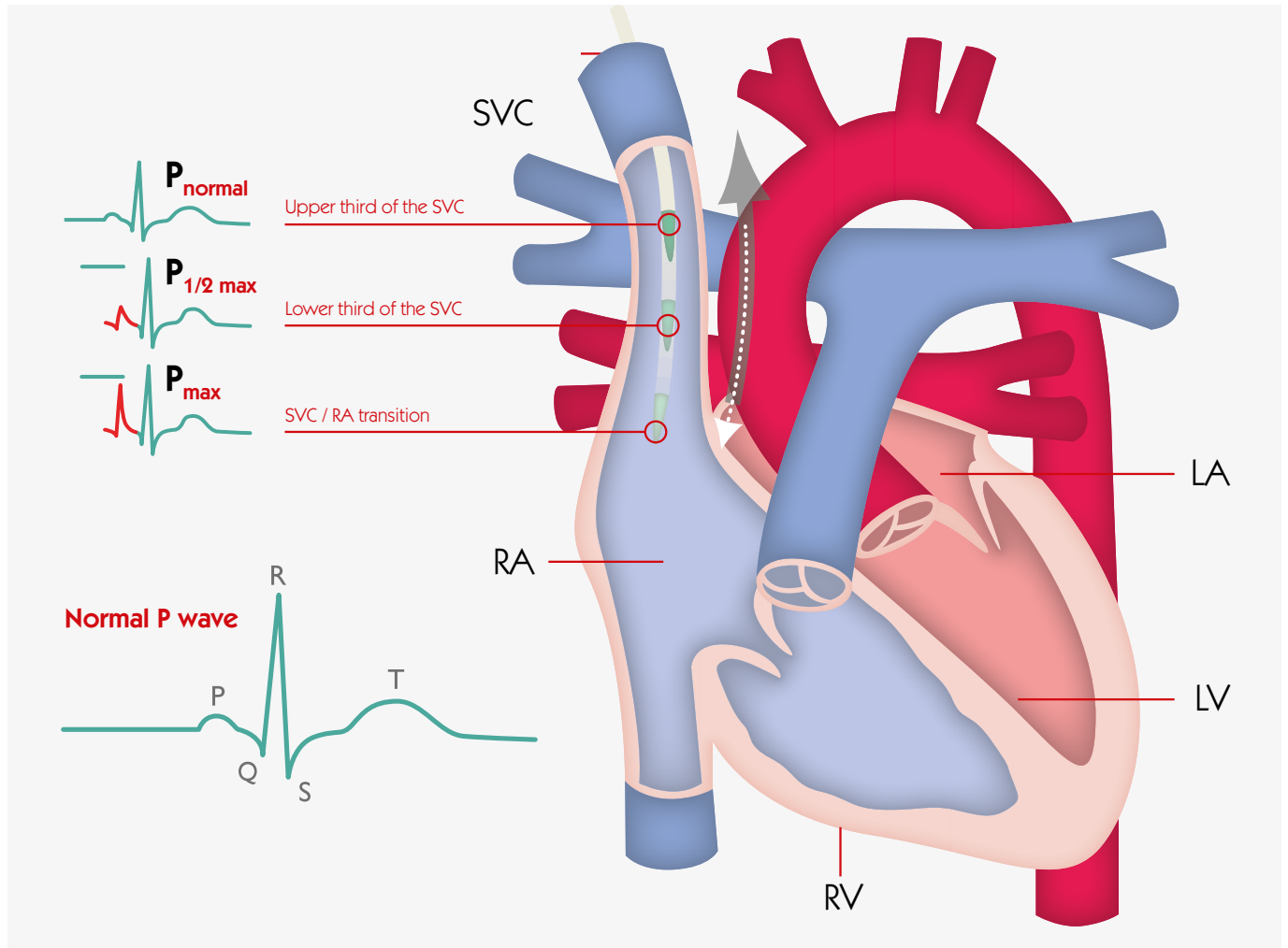
The waveforms are generated at the tip of the central venous catheter via the guidewire. These are captured in real time through the combcard adaptor and displayed on your ECG monitor.



combcard easy set up



Hitting the sweet spot



vyset procedure packs

A **vyset** procedure pack allows you to create a high quality pack to match your local protocol, incorporating all the items you need.

Standardisation is the central focus for optimising clinical processes. Costs can be cut and procedures can be implemented more safely. **vyset** custom packs contain all the essential components for disinfecting, draping and local anaesthesia. The risk of contamination through the manual preparation of individual components is eliminated.

vyset custom packs ensure safe, efficient central venous catheterisation.

The flexibility of our **vyset** custom packs makes them suitable for a number of different indications.

Preparation

Tailored tray configuration to ensure components are layered in line with your procedure process

Disinfection

Products to disinfect the skin for optimal patient protection against infection

Draping

Customised fenestrated drapes with unique heat sealed peelable aperture to reduce accidental catheter removal

Needle safety

A selection of devices to help prevent needlestick injuries and blood contamination

Insertion site

A selection of entry site protective dressings including biopatch for catheter infection prevention.

Administration

Flexibility to include syringes, needles and Vygon's IV needle-free connector options.





The benefits



Reduce waste



Save money



Reduce carbon footprint



Save set-up time

Why choose **vset** procedure packs?

From concept to implementation we will work with you to develop a high quality pack to meet your individual needs, giving you peace of mind throughout:

- Manufacturing
- Sterilisation
- Warehousing & distribution
- Implementation & training
- Stock management

Contact the **vset procedure pack team today to discuss your requirements**

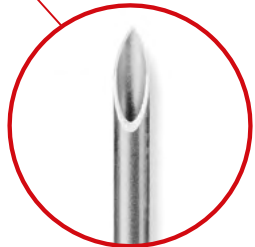
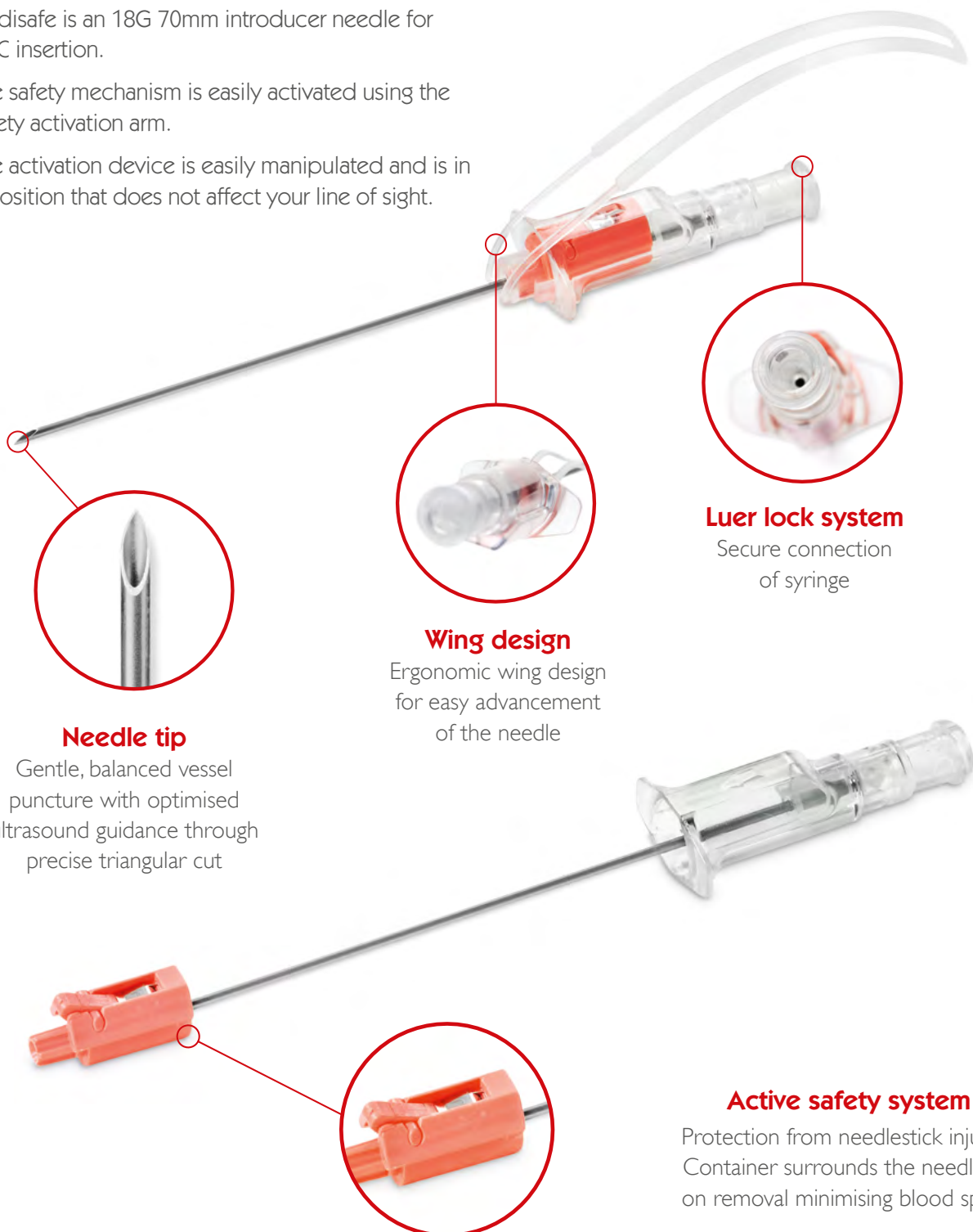
t: 01793 748800

e: custompacks@vygon.co.uk

seldisafe[®] safety needles

seldisafe[®] safety needles use the Seldinger technique for CVC insertion with built-in features to protect users from needlestick injuries

- Seldisafe is an 18G 70mm introducer needle for CVC insertion.
- The safety mechanism is easily activated using the safety activation arm.
- The activation device is easily manipulated and is in a position that does not affect your line of sight.



Needle tip

Gentle, balanced vessel puncture with optimised ultrasound guidance through precise triangular cut



Wing design

Ergonomic wing design for easy advancement of the needle



Luer lock system

Secure connection of syringe



Active safety system

Protection from needlestick injuries. Container surrounds the needle tip on removal minimising blood splash

multicath3 UP

Vygon code	Catheter			Dead vol (ml)			Flow rate (ml/min*)			ECG cable	Scalpel	Box Qty
	Ømm	Fr	Length	Dist	Med	Prox	Dist	Med	Prox			
000155912	3	9.0	12.5	0.50	0.50	1.50	55	16	200		✓	10
000155916	3	9.0	16	0.55	0.55	1.60	50	14	180	✓	✓	10
000155920	3	9.0	20	0.65	0.65	1.80	45	12	160	✓	✓	10

*ISO 10555-1:2003 1m H₂O

multicath5 UP

Vygon code	Catheter			Dead vol (ml)					Flow rate (ml/min*)					ECG cable	Scalpel	Box Qty
	Ømm	Fr	Length	Dist	Med.1	Med.2	Med.3	Prox	Dist	Med.1	Med.2	Med.3	Prox			
000159912	4	12.0	12.5	0.60	0.50	0.50	0.55	1.60	50	16	16.5	17	400		✓	10
000159916	4	12.0	16	0.65	0.56	0.56	0.60	1.80	45	14	14.5	15	350	✓	✓	10
000159920	4	12.0	20	0.70	0.60	0.60	0.65	2.00	40	12	12.5	13	300	✓	✓	10

*ISO 10555-1:2003 1m H₂O

seldisafe® safety needles

Vygon code	Ømm	Size (G)	Length (mm)	Guide (Ømm max)	Box Qty
000219131	1.05 x 1.26	18	70	0.90	20

combcard®

Vygon code	Description	Box Qty
000155912	combcard	10



seldisafe

Passive safety mechanism to protect against needlestick injuries in accordance with EU sharps directive



Safety scalpel

Active safety of the blade after skin incision follows EU sharps directive best practice



combcard

Fast, precise positioning of catheter using the Seldinger technique with ECG positioning



Z-MAN safety clamp

Reliable compression of highflow line through unique clamping design



06/2024 - DXJ0012004 Y00003 v4

FOR FURTHER INFORMATION, PLEASE CONTACT: info@vygon.co.uk

The specifications shown in this leaflet are for information only and are not, under any circumstances, of a contractual nature. This brochure has been printed on responsibly sourced and sustainable material. To help us reduce our carbon footprint all of our literature is available electronically either from your Product Specialist, on our website or by emailing info@vygon.co.uk

VYGON (UK) LTD, THE PIERRE SIMONET BUILDING, V PARK,
GATEWAY NORTH, LATHAM ROAD, SWINDON, WILTSHIRE SN25 4DL
RECEPTION: +44 (0)1793 748800 WWW.VYGON.CO.UK

 [@vygonuk](https://www.instagram.com/vygonuk)

